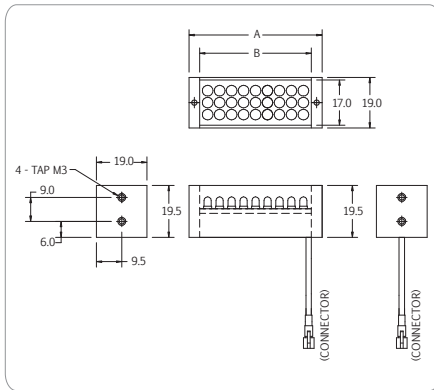
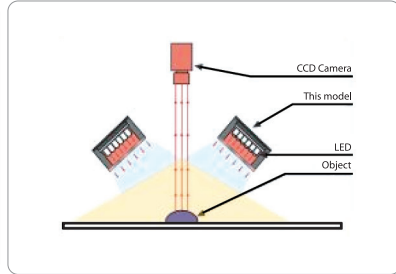


Direct Illumination

LBS2 SERIES - High density, rectangular illumination

LED arrays are arranged in rectangular array to provide rectangular illumination. The rectangular illumination can be mounted with different angle to provide difference in illumination reflection for image processing. Optional diffuser can be added to all LBS2 series for more even light distribution.

Application: general illumination, label inspection, character inspection, code recognition.



Technical Specification:

- Color Red, Green, Blue and White
- 24V DC Input Power
- Continuous and Strobe Applications
- Compact Size
- Lighting Cable 500mm

Customize Lighting:

- Customize Sizes, Mounting requirements
- Color and Voltage Available
- Consult Technical Sales for More Information

Model	Dimensions (MM)		Color	Voltage / Watt	Current
	A	B			
LBS2-00-050-3-X	50	42	● ● ○	24V / 1.08W 24V / 1.80W	45mA 75mA
LBS2-00-080-3-X	80	72	● ● ○	24V / 2.16W 24V / 2.16W	90mA 90mA
LBS2-00-100-3-X	100	92	● ● ○	24V / 2.52W 24V / 3.24W	105mA 135mA
LBS2-00-140-3-X	144	136	● ● ○	24V / 3.60W 24V / 4.32W	150mA 180mA
LBS2-00-190-3-X	190	182	● ● ○	24V / 4.68W 24V / 5.40W	195mA 225mA

Remark: 2 types of white are available- W: Cool White WW: Yellowish White